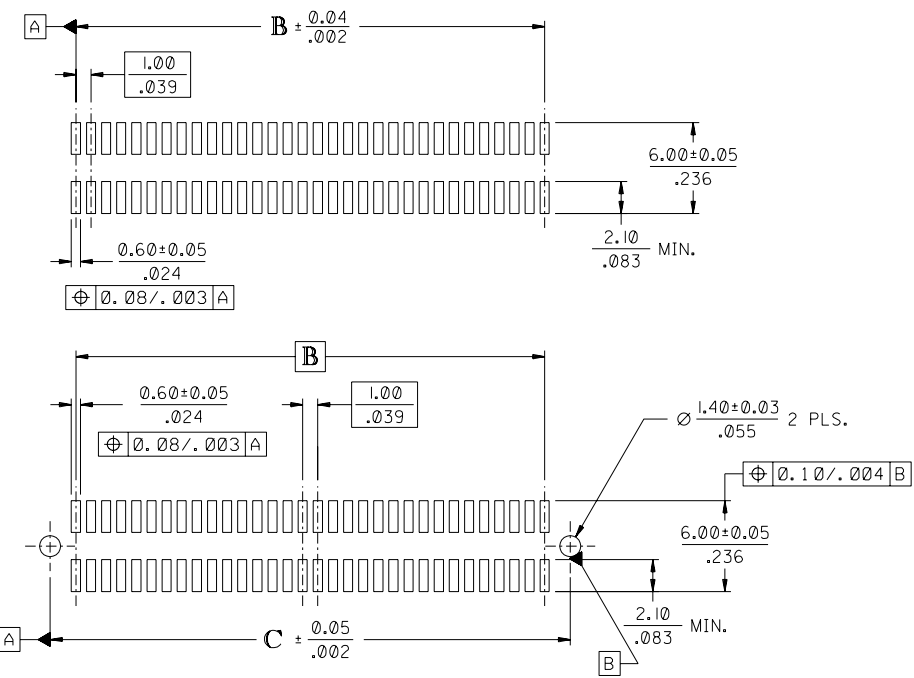


CIRCUIT SIZE	71439			
	DIM. A	DIM. B	DIM. C	DIM. D
20	13.90	9.00	12.40	12.22
	.547	.354	.488	.481
30	18.90	14.00	17.40	17.22
	.744	.551	.685	.678
40	23.90	19.00	22.40	22.22
	.941	.748	.882	.875
50	28.90	24.00	27.40	27.22
	1.138	.945	1.079	1.072
60	33.90	29.00	32.40	32.22
	1.335	1.142	1.276	1.269
64	35.90	31.00	34.40	34.22
	1.413	1.220	1.354	1.347
70	38.90	34.00	37.40	37.22
	1.531	1.339	1.472	1.465
80	43.90	39.00	42.40	42.22
	1.728	1.535	1.669	1.662
84	45.90	41.00	44.40	44.22
	1.807	1.614	1.748	1.741
90	48.90	44.00	47.40	47.22
	1.925	1.732	1.866	1.859
100	53.90	49.00	52.40	52.22
	2.122	1.929	2.063	2.056
110	58.90	54.00	57.40	57.22
	2.319	2.126	2.260	2.253
120	63.90	59.00	62.40	62.22
	2.516	2.323	2.457	2.450

**NOTES:**

- HOUSING MATERIAL: GLASS FILLED THERMOPLASTIC; UL 94V-0; SEE SHEET 2 FOR COLOR. TERMINAL MATERIAL: PHOSPHOR BRONZE; 0.205/.0080 THICK VACUUM CAP MATERIAL: STAINLESS STEEL; 0.255/.0100 THICK
- CONTACT PLATING FINISH: REFER TO CHART ON SHEET 2
- THIS PART, WHEN MATED WITH MOLEX 1.0mm PLUG CONNECTOR SERIES 71439, CONFORMS TO MOLEX PRODUCT SPECIFICATION PS-71436-9999. REFER TO CHART ON SHEET 2 FOR MATED STACK HEIGHTS FOR THIS RECEPTACLE.
- PACKAGING SPECIFICATIONS: REFER TO CHART ON SHEET 2.
- PEGS ARE OPTIONAL. REFER TO CHART ON SHEET 2.
- VACUUM PICK & PLACE CAP IS OPTIONAL. REFER TO CHART ON SHEET 2.
- THIS PART CONFORMS TO EIA STANDARD 700 AAAB FOR 1.0mm TWO-PART CONNECTORS FOR USE WITH PARALLEL PRINTED BOARDS.
- COPLANARITY OF SMT TAILS: 0.10 MM/.004 INCH MAXIMUM
- 64-CIRCUIT RECEPTACLE ASSEMBLY WITH PEGS AND VACUUM CAP SHOWN FOR ILLUSTRATION PURPOSES ONLY.
- INCH DIMENSIONS SHOWN FOR REFERENCE ONLY.
- ASSEMBLY TO HAVE DATE CODE: XX XX WEEK YEAR



**RECOMMENDED PCB LAYOUT (WITH AND WITHOUT PEGS)**  
 RECOMMENDED PCB THICKNESS: 1.00 ± 0.10 / .039 ± .004

DIMENSIONS UNITS ARE  $\frac{MM}{INCH}$

2	I
I	J
MFG. SH.	REV.

TOLERANCE AT G-6 ECN UCP2004-0262 RWHITE 04/02/18		UNLESS OTHERWISE SPECIFIED TOLERANCES: ANGULAR ± 1/2°		REVISE ONLY ON CAD SYSTEM	
CHG PK FOR -0164 ECN UCP2003-2037 RWHITE 03/04/04		INCH METRIC 3 PLACE ± .005 --- 2 PLACE ± .01 ± 0.13 --- 1 PLACE --- ± 0.25 ---		TITLE SALES ASSY, 1.0mm BOARD-TO-BOARD RECEPTACLE CONNECTOR, 5.30/.209 STACK HEIGHT	
ADD -0264 ECN UCP2003-0733 BBARKER 02/10/31		DRAFT WHERE APPLICABLE MUST REMAIN WITHIN DIMENSIONS		MOLEX INCORPORATED LITSE,ILL. 60532 U.S.A. SHEET NO. DATE 1 OF 2 03/23/95	
ADD BASE CHAMFERS ECN UCP2004-2598 RWHITE 04/06/28		DRWG. BY REED CHK'D. BY REED APP'D. BY BIXLER SCALE 4 : 1		PART NO. DRWG. NO. SEE SHEET 2 SDA-71439-0***	
LTR. REVISIONS		LTR. REVISIONS		FILE NAME: 57143901.DWG THIS DRAWING CONTAINS INFORMATION THAT IS PROPRIETARY TO MOLEX INC. AND SHOULD NOT BE USED WITHOUT WRITTEN PERMISSION.	

**WHITE (NATURAL) MATERIAL**

PART NUMBER	CIRCUIT SIZE	CONTACT PLATING SEE NOTE BELOW CHARTS	PEGS	PICK & PLACE CAP	PACKAGING SPEC. NUMBER	PACKAGING TYPE
71439-0164	64	30 GOLD	YES	NO	PK-70873-0601	TUBE
71439-0264	64	50 GOLD	NO	YES	PK-70873-0631	TAPE & REEL
71439-0364	64	30 GOLD	YES	YES	PK-70873-0607	TUBE
71439-0464	64	30 GOLD	YES	YES	PK-70873-0631	TAPE & REEL
71439-0564	64	30 GOLD	NO	NO	PK-70873-0683	TAPE & REEL
71439-0764	64	30 GOLD	NO	YES	PK-70873-0606	TUBE
71439-0864	64	30 GOLD	NO	YES	PK-70873-0631	TAPE & REEL

**BLACK MATERIAL WITH MATTE PICK & PLACE CAP**

PART NUMBER	CIRCUIT SIZE	CONTACT PLATING SEE NOTE BELOW CHARTS	PEGS	PICK & PLACE CAP	PACKAGING SPEC. NUMBER	PACKAGING TYPE
71439-0964	64	30 GOLD	NO	YES	PK-70873-0631	TAPE & REEL

CONTACT PLATING:

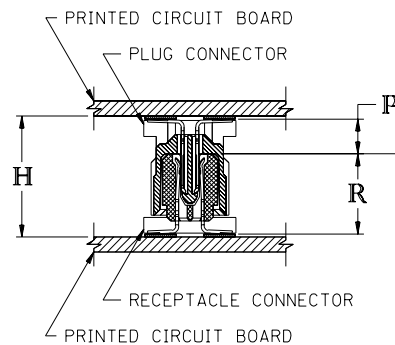
30 GOLD - 0.76 MICROMETER/30 MICROINCH MINIMUM GOLD IN CONTACT AREA AND 1.91 MICROMETER/75 MICROINCH MINIMUM TIN IN SOLDER TAIL AREA. NICKEL UNDERPLATE OVER ENTIRE TERMINAL.

50 GOLD - 1.27 MICROMETER/50 MICROINCH MINIMUM GOLD IN CONTACT AREA AND 1.91 MICROMETER/75 MICROINCH MINIMUM TIN IN SOLDER TAIL AREA. NICKEL UNDERPLATE OVER ENTIRE TERMINAL.

\*THE PRIMARY SHIPPING CARTON WILL BE LABELED "COMPLIANT TO RoHS DIRECTIVE 2002/95/EC AND ELV ANNEX II OF DIRECTIVE 2000/53/EC". CARTONS WITHOUT THIS LABEL MAY CONTAIN PRODUCT WITH LEAD.

RECOMMENDED PLUG/RECEPTACLE COMBINATION FOR  
MATED STACK HEIGHT PER EIA STANDARD 700 AAAB

MATED STACK HEIGHT	RECEPTACLE HEIGHT	RECEPTACLE SERIES NO.	PLUG HEIGHT	PLUG SERIES NO.
8.00/.315	5.30/.209	71439-0***	2.30/.090	71436-0***
9.00/.354	5.30/.209	71439-0***	3.30/.130	71436-1***
10.00/.394	5.30/.209	71439-0***	4.30/.169	71436-2***



PLUG STACK HEIGHT  
+ RECEPTACLE STACK HEIGHT  
+ 0.40/.016 (SOLDER PASTE ALLOWANCE)  
= MATED STACK HEIGHT

BOTTOMING SURFACE

P = PLUG STACK HEIGHT  
R = RECEPTACLE STACK HEIGHT  
H = MATED STACK HEIGHT

DIMENSIONS UNITS ARE  $\frac{MM}{INCH}$

		EI	SEE SHEET I	UNLESS OTHERWISE SPECIFIED TOLERANCES: ANGULAR ± 1/2°	REVISE ONLY ON CAD SYSTEM
		E	SEE SHEET I		
I	SEE SHEET I	D	SEE SHEET I	INCH METRIC 5 PLACE ± --- ± --- 2 PLACE ± --- ± --- 1 PLACE --- ± ---	TITLE SALES ASSY, 1.0mm BOARD-TO-BOARD RECEPTACLE CONNECTOR, 5.30/.209 STACK HEIGHT
H	SEE SHEET I	C1	SEE SHEET I		
G	SEE SHEET I	C	SEE SHEET I	MOLEX INCORPORATED U.S.A. 60532	SHEET NO. 2 DATE 03/23/95
F1	SEE SHEET I	B	SEE SHEET I		
F	SEE SHEET I	A	SEE SHEET I	PART NO. SDA-71439-0*** DRWG. NO.	SEE CHART
LTR.	REVISIONS	LTR.	REVISIONS		
			DRWG. BY REED	CHK'D. BY REED	FILE NAME 57143902
			APP'D. BY BIXLER	SCALE NONE	THIS DRAWING CONTAINS INFORMATION THAT IS PROPRIETARY TO MOLEX INC. AND SHOULD NOT BE USED WITHOUT WRITTEN PERMISSION.

71439

B

A

C